

University of New Haven

SUPPORTING STUDENTS IN THE RESIDENCE HALLS

Cindy Sanders | Office of Residential Life



OFFICE OF RESIDENTIAL LIFE

Engage – Empower – Capable

Helping Your Student Get the Most Out of Their Living and Learning Experience

Convenience, Amenities, Community, and Adjusting with Support

The affordability of on-campus living is an investment that I recommend to compare with the yearly cost of rent, utilities, security deposits, commuting expenses, campus location and most importantly piece of mind.



Resources & Support

- Academic Peer Mentors (APM)
 - o *These student staff members work with the Center for Student Success (CSS) and are accessible in the first-year residential communities to provide academic support to students.*
- Resident Assistants (RA)
 - o *Our student staff are the best point of contact for your student who has questions or needs assistance. If your student reaches out, please make sure they have reached out to their RA as they are a great resource that can connect them to various campus resources.*
- Area Coordinators (AC)/Residence Directors (RD)
 - o *Our professional and graduate building supervisors are the next level of support for your student if they cannot reach their RA or feel like they need additional support outside their RA. This is also the first and main point of contact for all parents and families of students living in the residence halls. The most up-to-date contact information can be found online at: <https://www.newhaven.edu/student-life/living-on-campus/staff.php>*
- Conflict Resolution
 - o *We support students in maintaining healthy relationships and resolving conflict. We do this by skill sharing and assisting them in navigating complex situations.*

Resources & Support

- Residential Curriculum

- *To execute our educational priority, we deliver a structured set of experiences and enrichment activities that are designed to bolster students' knowledge, awareness, and competency to support their development, wellbeing, and interpersonal relationships.*

- Programming

- *Our staff host a series of social, cultural, and educational events to foster connections among students and help them build skills essential to living independently. Last year, we hosted over 800 events.*

- Leadership Development

- *There are various leadership and employment opportunities for students offered through our office: Desk or Office Assistants, Hall Council, Residence Hall Association, and Resident Assistant.*

- Residence Hall Association (RHA)

- *This organizing body works closely with Residential Life leadership to advocate for the needs of the residential communities. Students can choose to join RHA, get involved in their building Hall Council, or bring their ideas and concerns to the RHA e-board.*

ENHANCED LEARNING COMMUNITIES

Engage – Empower – Capable

Helping Your Student Get the Most Out of Their Living and Learning Experience

Connect, Explore, and Adapt

Being part of an Enhanced Learning Community allows students to build strong connections with peers and faculty while gaining early academic support, helping them transition smoothly into college life and succeed in their chosen major.



PARTNERING WITH PARENTS

Engage – Empower – Capable

Helping Your Student Get the Most Out of Their Living and Learning Experience

Commitment, Partnership, and Foundation

Committed to your student(s)

How We Partner with You

What You Can Do

Together, we create a foundation for student success.



Four Critical Conversations



Academics

- What are your expectations?
- Grades may not be the same as high school



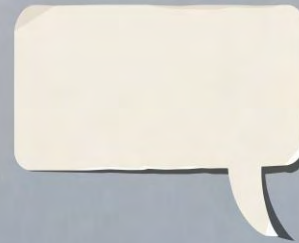
Finances

- Budgeting
- Employment



Health & Safety

- Washing clothes, cleaning room, etc.
- Alcohol & Drugs – expectations, open conversation, safety net

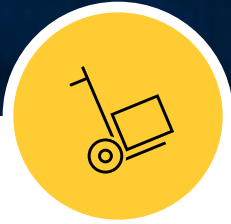


Communication

- When and how – *this will change*
- Who they should be reaching out to for help

Welcoming Our Newest Chargers!

Our commitment is to provide a strong transition program to support students in their transition to college



Opening & Charge In

It is important for your students to move in on the scheduled date and participate in the Charge In programming to best prepare them to be a successful Charger!

Charlie Fast Pass: August 16, 2025

New Student Move-In: *August 20, 2025*

Charge In: *August 21 - 24, 2025*



First Six Weeks

There are various tasks that new students will complete during their first six weeks as well as events they are encouraged to attend to get connected to other Chargers and make new connections.

- Floor Meetings
- Roommate Agreements
- Hall Council Elections
- Residential Curriculum & Programming

POWER
ON

QUESTIONS

Contact Us!

Office Location: Bixler Hall

Email: reslife@newhaven.edu

Phone: (203) 932-7076

Instagram: @unewhavenreslife

