

SOAR 2024

STUDENT ORIENTATION AND ADVISING

Dr. Stephanie Gillespie

University of New Haven





University of New Haven

TAGLIATELA COLLEGE OF ENGINEERING (TCOE)

College Structure and Overview

Office of the
Dean

Dean Ron
Harichandran

Associate Dean
Stephanie
Gillespie

Assistant to the
Dean: Dionne
Gray-Wilson

Chemistry and
Chemical
Engineering
and
Biomedical
Engineering
Dept (CCBM)

Chair: Dr.
Dequan Xiao

BS Chemistry

BS Chemical and
Biomolecular
Engineering

MS Biomedical
Engineering
(Dual Degree)

Civil and
Environmental
Engineering
Department
(CEE)

Chair: Dr.
Byungik Chang

BS Civil
Engineering

Sustainability
Minor

Environmental
Engineering
Minor

Engineering and
Applied Science
Courses (EASE)

Coordinator:
Professor Eric
Brisart

BS Engineering

EASC courses

Entrepreneurial
Mindset in STEM
Certificate

Electrical and
Computer
Engineering and
Computer
Science Dept
(ECECS)

Chair: Dr. Ali
Golbazi

BS Electrical and
Computer
Engineering

BS Computer
Science

BS Cybersecurity

Mechanical and
Industrial
Engineering
Department
(MIE)

Chair: Dr. Ganesh
Balasubramanian

BS Mechanical
Engineering



What does it take to be a successful student in the Tagliatela College of Engineering?



First Semester Curriculum

Engineering Students

Introduction to Engineering

Calculus 1

General Chemistry 1 or Physics 1

Seminar in Academic Inquiry and Writing (English)

Introduction to Communication

Computer Science and Cybersecurity Students

Introduction to Computing

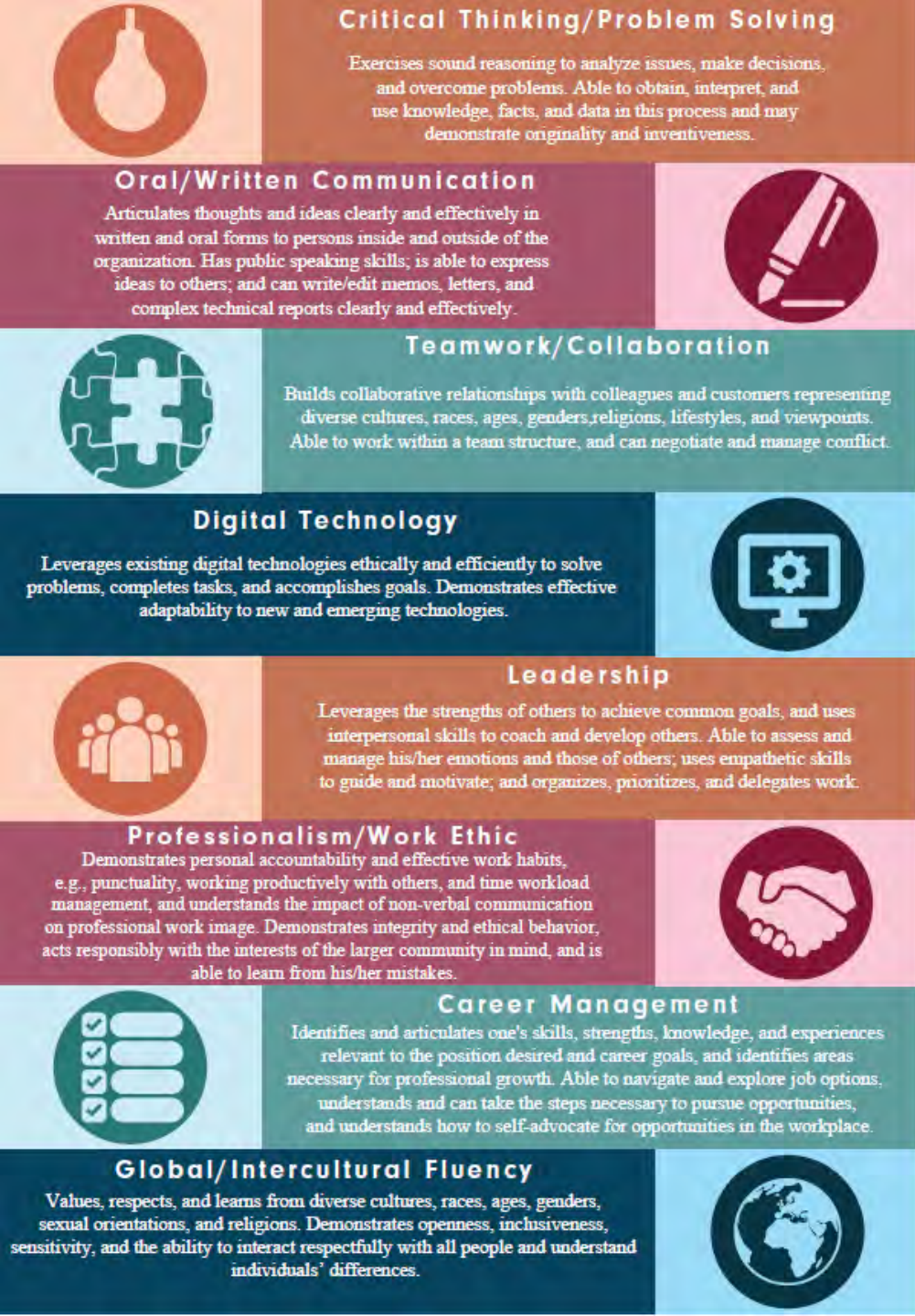
Introduction to C Programming

Seminar in Academic Inquiry and Writing (English)

Pre-Calculus or Calculus 1

Core Curriculum Course





Your education is more than technical

“[My biggest mistake is probably] weighing too much on someone's talent and not someone's personality. I think it matters whether someone has a good heart.”

- Elon Musk

Nine Core Curriculum Competencies*

- 1: Written Communication
- 2: Oral Communication and Presentation
- 3: Mathematical and Quantitative Literacy
- 4: Scientific Exploration
- 5: Critical Thinking and Problem Solving
- 6: Historical Perspectives
- 7: The Individual and Society
- 8: Global and Intercultural Awareness
- 9: Perspectives on Creative Arts

*Some Core competencies are pre-assigned with specific Math and Science Courses required for your degree program.

University Core Curriculum

Initial MATH Placement Matters

Placement was based on prior math courses and grades earned.

If you are not starting in the “expected” math course, you may need to catch-up or you won’t be able to graduate in 4 years.

Not happy with your initial placement? You can:

- Make sure we have your AP test results or college class transcript
- Take a math placement exam by July 15
- Accelerate through MATH 1110 + MATH 1115 in the fall semester with the Math Zone



Classroom Technology – TCoE Laptop Policy

TCoE classes utilize a variety of technology and software during the class periods. We provide the software, but you will need to have a compatible laptop for the duration of your studies.

All Engineering Students:

Windows PC, Intel i7 processor, 16 GB or more RAM, 1TB or more SSD, Dedicated Graphics Card

Computer Science and Cybersecurity & Networks Students:

You have the option to purchase a Windows or Mac computer (check your email).

Chemistry Students:

No laptop required, but most college courses will benefit from personal ownership of a laptop.

Important to note for all academic programs: Chromebooks and Surface in S-mode tablets cannot run all required software and services and are not recommended.



Before classes start

- Charge- In and Orientation sessions week before classes start
- Academic advisor may be available during email during summer, but expect delays
- Review your academic worksheet or degree audit for preview of all required courses in your program

Once classes start

- Visit faculty during office hours, or make an appointment
- Academic advising for Spring course registration will happen in October- must book an appointment to be able to register

**Getting
acquainted to
your
academic
program**

How to meet with your advisor

Level Undergraduate Classification Junior Major Cybersecurity and Networks Program Bachelor

Advisor Liberty Page (Primary) Student Status Active Academic Attribute Honors Overall GPA

Undergraduate Catalog Year 2020-2021

- Confirm your academic advisor in DegreeAudit or Navigate
- Faculty will send out emails with sign-up links or information for pre-registration advising (~October + February/March)
- Some faculty have enabled self-signup of office-hours appointments via:
 - Navigate
 - Email links such as youcanbookme or calendly
- Send an email, or stop by their office during office hours.



In TCoE

- Pre-Registration Meetings with Faculty each Semester
- Faculty Office hours in person and through Zoom
- Peer Assistants

Throughout the University

- MathZone- walk-in appointments, tutors, and customized curriculum
- CSS: Center for Student Success
- CLR: Center for Learning Resources
- CDC: Career Development Center
- ARC: Accessibility Resource Center

**Academic
advising
and assistance**

Connect with a Peer Mentor

TCoE First Year Mentoring program

- Incoming students are mentored by sophomores and juniors (transfer mentors available)
- Mentor/mentee pairing is based on interests of both parties
- Texting, meeting in person, or emails – you choose how often you talk and for what reasons. Start building connections **this summer!**

Signup link: bit.ly/NHFYEmentee

Note this program is separate from the mentoring program sponsored by the Myatt Center for Diversity and Inclusion.



HOW TO BE A SUCCESSFUL TCOE STUDENT FROM DAY 1

University of
New Haven



**POWER
ON**

Differences between high school and college

	In High School	In College
Class Time Expectations	You are generally introduced to content during class time	May have to read or watch videos in advance of coming to class, class is for discussion
Homework and Studying Expectations	Homework given regularly, may have class time to work on it	Homework weekly, but is fully outside of class hours. Plan for at least 6 hours of outside of class time for study/hw per course
Asking Questions	You usually have time during class to ask questions	If a class is busy, you will have to go to office hours with the professor or TA to ask questions
If you don't succeed on the first time...	You may be given a chance to resubmit your homework or retake an exam	A low grade stays in your grade calculation. Need to study before you start getting low grades

Learning happens outside of the classroom too

Diversity Organizations

- Society of Women Engineers (SWE)
- Society of Hispanic Professional Engineers (SHPE)
- National Society of Black Engineers (NSBE)
- Women in Cybersecurity (WiCyS)

Professional Organizations

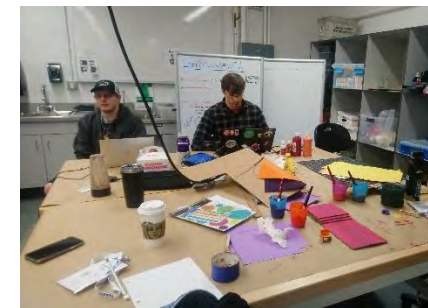
- ACS (Chemistry)
- AIChE (ChemE)
- ASCE (Civil)
- ASME (MechE)
- Engineers Without Borders (EWB)
- IEEE (ElecEng.)
- IISE (Ind. & Syst. Eng)
- Robotics Club
- Hacking Team

Honor Societies

- Eta Kappa Nu
 - ECE
- Pi Tau Sigma
 - MechE
- Theta Tau
 - all Engineering
- Upsilon Pi Epsilon
 - CompSci

General Opportunities

- Makerspace
- Engineering Student Ambassadors
- EASC Course Peer Assistants
- Summer Undergraduate Research Fellowship (SURF)



Because college isn't the goal, a career is!

Prepare now for your future career

Get involved- build experiences for your resume!

- Leadership roles in professional student organizations
- Student club competitions
- Attend panels and events with industry representatives

The big events:

- Fall Career Fair
- Spring STEM Career Fair
- Internships: typically after junior year
- PE licensure



Experiential Education (ExEd)

Internship course a required part of the curriculum, typically 200-300 hours of work in relevant industry.

Culminating capstone experience to combine your academics with industry-sponsored projects

Other experiences for hands-on learning include labs, service-learning courses, and more.



Entrepreneurial Mindset Certificate in STEM

- Silver Level: Exploration
- Gold Level: Participation
- Platinum Level: Demonstrated Leadership

Events

- LLC Discussion Dinners
- 24-Hr Design Sprints
- University Innovation Fellowship Program
- EASC 4420: Entrepreneurial Concepts for Engineers and Scientists
- Alvine New Venture Pitch Competition



Interested? Email Dr. Gillespie at sgillespie@newhaven.edu to get updates and info.

Your four-year college to career plan

First Year:

- Engineering LLC
- Intro courses
- Get involved in student orgs
- Meet your academic advisor
- Create your LinkedIn Profile

Third Year:

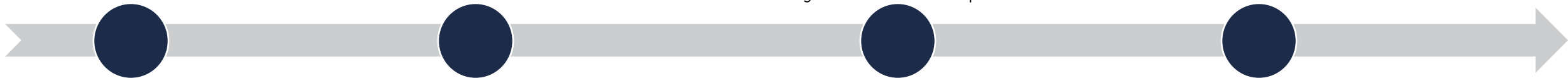
- Begin to choose technical electives
- Continue extracurricular and leadership activities
- Consider undergraduate research
- Continue to build your professional network
- Determine direct to industry or grad school
- Find your internship

Second Year:

- Update your resume from HS to College
- Expand into technical courses
- Take on leadership roles
- Begin meeting companies at events
- Visit Career Development Center for resume workshops and interviewing workshops

Fourth Year

- Capstone design experience
- Job applications or grad school applications
- Continued networking with technical societies and speakers on campus



Dual Degrees

Interested in also earning a MS Degree?

To enter the direct-entry dual-degree program and ensure proper advising, you must opt-in before add/drop (first week of school).

If students do not opt-in now, their next window will be junior year

Email Rob Holub (rho lub@newhaven.edu) to learn more.



UNewHaven Academic Resources

- Help with general study habits or college success: **Center for Student Success (CSS)**
- Need accommodations to be successful in courses: **Accessibility Resource Center (ARC)**
- Help with course materials: **Faculty Office Hours, Peer Assistants, Center for Learning Resources (CLR), MathZone**
- Need help with starting a term paper, grammar, or “too wordy” essays: **Writing Center**
- Uncertain what courses to take or how to fill out registration related forms: **Academic Advisors**

UNewHaven Support Resources

- Hungry or missing meals: **Campus Pantry**
- Need clothing for an interview: **Career Closet**
- Someone to listen- stress, anxiety, mental health, etc.: **Counseling and Psychological Services**
- Death of family member, or illness that needs doctors note for missing class: **Dean of Students Office**
- Don't know where to start: **TCoE Associate Dean**
- Report bias, inappropriate conduct, etc.: **Report It forms or Dean of Students**
- Supplies available for check-out from Dean's Office: **Graphing and Non-Graphing Calculators, Padfolios (for interviewing), Arduino Kits, Laptops***

College Professionalism- Courses

Courses

- Attendance is expected, even in “remote” courses
- Cameras may be used for participation, exams, etc.
- Have policy/procedure/format questions? Check the syllabus first!
- You are responsible for your own education: track the assignment deadlines, review grades and feedback, and ask for help early and often

Grades

- It is okay to ask for clarification on how an assignment was graded.
- Grading concerns should be brought to the professor first, then the chair, then the Associate Dean.
- Note we cannot discuss academic grades or educational records with family members unless FERPA release is signed each academic year.

College Professionalism- Emails

Emails

- Most university communication is via email. Excuses of “I didn’t see the email,” don’t count in college. Start a habit of checking your email every day!
- Address emails to Professor X or Dr. X (avoid Mr., Ms., Mrs., or FirstName)
- Check spelling and write in complete sentences before sending an email
- Most faculty members respond within 24 hours, but it isn’t instant. Weekend and Summer responses vary.
- Use the university contact list in Outlook to find an email address for a student, faculty, or staff.
- You are responsible for ensuring the privacy of your email address and account access. You should not be sharing your email password with your parents or having them send emails through your email on your behalf.

Student Questions

Practice asking questions now!!

This is your time, what didn't I cover that you have questions about?



Study Abroad in Engineering

Spring 2025 Cohort: First Year Students will continue to take math, science, and engineering or computing courses and stay on track to graduate.

Explore another country, embed yourself in another culture, and enhance your learning experience.

Next steps: start your application!

[Prato Semester application](#)



Savanna Pantoja, '26
Major: Mechanical Engineering
Study Abroad: Prato, Italy

My favorite memory from my time in Prato is when I climbed to the top of the dome of the Duomo (Cathedral) of Florence. We climbed over 450 steps to see the amazing view of the city.

Everyday during the summer, I used our snack vouchers to get gelato. I was able to try all 15 flavors!

Prato has a rich Italian scientific history such as the inventions of Galileo and Leonardo, and the chance to go to specific museums in Florence to see more about them. I went to the Leonardo De Vinci museum and got to see the sketches from his codices made into real life prototypes. I loved my semester in Prato so much, I went back to be an RA this summer!

Keeping in Touch

Be on the lookout for a follow email from the Tagliatela College of Engineering with this presentation and signup links for our mentoring program!

Send your questions to:

Dr. Stephanie Gillespie,
Associate Dean, TCoE

sgillespie@newhaven.edu





University of New Haven

TAGLIATELA COLLEGE OF ENGINEERING (TCOE)

FOR FAMILIES

Study Abroad in Engineering

Spring 2025 Cohort: First Year Students will continue to take math, science, and engineering or computing courses and stay on track to graduate.

Explore another country, embed yourself in another culture, and enhance your learning experience.

Next steps: start your application!

[Prato Semester application](#)



Savanna Pantoja, '26
Major: Mechanical Engineering
Study Abroad: Prato, Italy

My favorite memory from my time in Prato is when I climbed to the top of the dome of the Duomo (Cathedral) of Florence. We climbed over 450 steps to see the amazing view of the city.

Everyday during the summer, I used our snack vouchers to get gelato. I was able to try all 15 flavors!

Prato has a rich Italian scientific history such as the inventions of Galileo and Leonardo, and the chance to go to specific museums in Florence to see more about them. I went to the Leonardo De Vinci museum and got to see the sketches from his codices made into real life prototypes. I loved my semester in Prato so much, I went back to be an RA this summer!

College Structure and Overview

Office of the
Dean

Dean Ron
Harichandran

Associate Dean
Stephanie
Gillespie

Assistant to the
Dean: Dionne
Gray-Wilson

Chemistry and
Chemical
Engineering
and
Biomedical
Engineering
Dept (CCBM)

Chair: Dr.
Dequan Xiao

BS Chemistry

BS Chemical and
Biomolecular
Engineering

MS Biomedical
Engineering
(Dual Degree)

Civil and
Environmental
Engineering
Department
(CEE)

Chair: Dr.
Byungik Chang

BS Civil
Engineering

Sustainability
Minor

Environmental
Engineering
Minor

Engineering and
Applied Science
Courses (EASE)

Coordinator:
Professor Eric
Brisart

BS Engineering

EASC courses

Entrepreneurial
Mindset in STEM
Certificate

Electrical and
Computer
Engineering and
Computer
Science Dept
(ECECS)

Chair: Dr. Ali
Golbazi

BS Electrical and
Computer
Engineering

BS Computer
Science

BS Cybersecurity

Mechanical and
Industrial
Engineering
Department
(MIE)

Chair: Dr. Ganesh
Balasubramanian

BS Mechanical
Engineering

Classroom Technology – TCoE Laptop Policy

TCoE classes utilize a variety of technology and software during the class periods. We provide the software, but you will need to have a compatible laptop for the duration of your studies.

All Engineering Students:

Windows PC, Intel i7 processor, 16 GB or more RAM, 1TB or more SSD, Dedicated Graphics Card

Computer Science and Cybersecurity & Networks Students:

You have the option to purchase a Windows or Mac computer (check your email).

Chemistry Students:

No laptop required, but most college courses will benefit from personal ownership of a laptop.

Important to note for all academic programs: Chromebooks and Surface in S-mode tablets cannot run all required software and services and are not recommended.



Initial MATH Placement Matters

Placement was based on prior math courses and grades earned.

If you are not starting in the “expected” math course, you may need to catch-up or you won’t be able to graduate in 4 years.

Not happy with your placement? You can:

- Make sure we have your AP test results or college class transcript
- Study the available course materials online and take your challenge test (TBD).
- Accelerate through MATH 1110 + MATH 1115 in the fall semester with the Math Zone.



Before classes start

- Charge- In and Orientation sessions week before classes start
- Academic advisor may be available during email during summer, but expect delays
- Review your academic worksheet or degree audit for preview of all required courses in your program

Once classes start

- Visit faculty during office hours, or make an appointment
- Academic advising for Spring course registration will happen in October- must book an appointment to be able to register

**Getting
acquainted to
your
academic
program**

UNewHaven Academic Resources

Center for Student Success	Help with general study habits or college success, including college transitions. First year student schedule support.
Accessibility Resource Center (ARC)	Review and support learning accommodations to be successful in courses
Faculty Office Hours, Peer Assistants, Center for Learning Resources (CLR), MathZone	Free Tutoring. Students can get help with course materials from professors, peer tutors, or professional tutors.
Writing Center	Provide writing support for starting a term paper, grammar, or “too wordy” essays
Academic Advisors	Provide academic advice for course selection, career advice, or help navigating our university system.

College Professionalism- Courses

Helping your student understand college course responsibilities

- Attendance is expected, even in “remote” courses
- Cameras may be used for participation, exams, etc.
- Have policy/procedure/format questions? Check the syllabus first!
- They are responsible for your own education: track the assignment deadlines, review grades and feedback, and ask for help early and often

Grades

- It is okay for them ask for clarification on how an assignment was graded.
- Grading concerns should be brought to the professor first, then the chair, then the Associate Dean.
- Note we cannot discuss academic grades or educational records with family members unless FERPA release is signed each academic year.

Your student's four-year college to career plan

First Year:

- Engineering LLC
- Intro courses
- Get involved in student orgs
- Meet your academic advisor
- Create your LinkedIn Profile

Third Year:

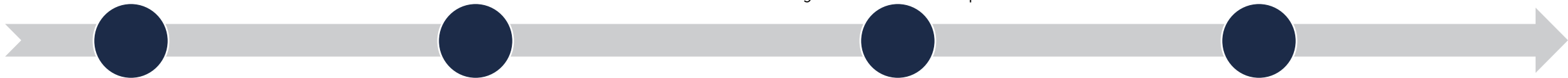
- Begin to choose technical electives
- Continue extracurricular and leadership activities
- Consider undergraduate research
- Continue to build your professional network
- Determine direct to industry or grad school
- Find your internship

Second Year:

- Update your resume from HS to College
- Expand into technical courses
- Take on leadership roles
- Begin meeting companies at events
- Visit Career Development Center for resume workshops and interviewing workshops

Fourth Year

- Capstone design experience
- Job applications or grad school applications
- Continued networking with technical societies and speakers on campus



Learning happens outside of the classroom too

Diversity Organizations

- Society of Women Engineers (SWE)
- Society of Hispanic Professional Engineers (SHPE)
- National Society of Black Engineers (NSBE)
- Women in Cybersecurity (WiCyS)

Professional Organizations

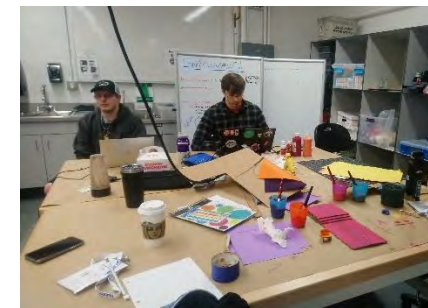
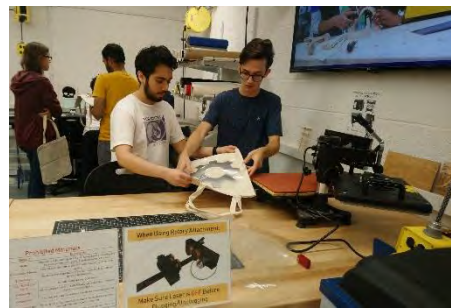
- ACS (Chemistry)
- AIChE (ChemE)
- ASCE (Civil)
- ASME (MechE)
- Engineers Without Borders (EWB)
- IEEE (ElecEng.)
- IISE (Ind. & Syst. Eng)
- Robotics Club
- Hacking Team

Honor Societies

- Eta Kappa Nu
 - ECE
- Pi Tau Sigma
 - MechE
- Theta Tau
 - all Engineering
- Upsilon Pi Epsilon
 - CompSci

General Opportunities

- Makerspace
- Engineering Student Ambassadors
- EASC Course Peer Assistants
- Summer Undergraduate Research Fellowship (SURF)



Dual Degrees

Interested in also earning a MS Degree?

To enter the direct-entry dual-degree program and ensure proper advising, you must opt-in before add/drop (first week of school).

If students do not opt-in now, their next window will be junior year

Email Rob Holub (rho lub@newhaven.edu) to learn more.



UNewHaven Support Resources

- Hungry or missing meals: **Campus Pantry**
- Need clothing for an interview: **Career Closet**
- Someone to listen- stress, anxiety, mental health, etc.: **Counseling and Psychological Services**
- Death of family member, or illness that needs doctors note for missing class: **Dean of Students Office**
- Don't know where to start: **TCoE Associate Dean**
- Report bias, inappropriate conduct, etc.: **Report It forms or Dean of Students**
- Supplies available for check-out from Dean's Office: Graphing and Non-Graphing Calculators, Padfolios (for interviewing), Arduino Kits, Laptops*

Connect with a Peer Mentor

TCoE First Year Mentoring program

- Incoming students are mentored by sophomores and juniors (transfer mentors available)
- Mentor/mentee pairing is based on interests of both parties
- Texting, meeting in person, or emails – you choose how often you talk and for what reasons. Start building connections **this summer!**

Signup link: bit.ly/NHFYEmentee

Note this program is separate from the mentoring program sponsored by the Myatt Center for Diversity and Inclusion.



3 tips to support your student:

Students resist asking for help.

- Encourage them to visit faculty, the CLR, or peer assistants for help if they begin to struggle academically.

Students don't get involved, missing out on making friends, study groups, and meeting faculty.

- We recommend they join 1-2 student organizations in their first semester, ideally a TCoE student org

Students feel like no one cares because their professors/advisors don't respond to email immediately

- Plan ahead: allow at least 2 business days for email responses
- Schedule meetings directly, stop by their office, or call their office number



Keeping in Touch

Your student will receive a follow email from the Tagliatela College of Engineering with this presentation and signup links for our mentoring program!

Send your questions to:

Dr. Stephanie Gillespie,
Associate Dean, TCoE

sgillespie@newhaven.edu

